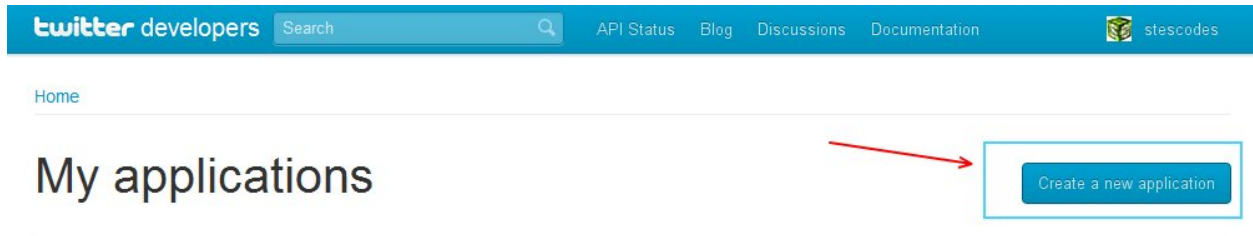


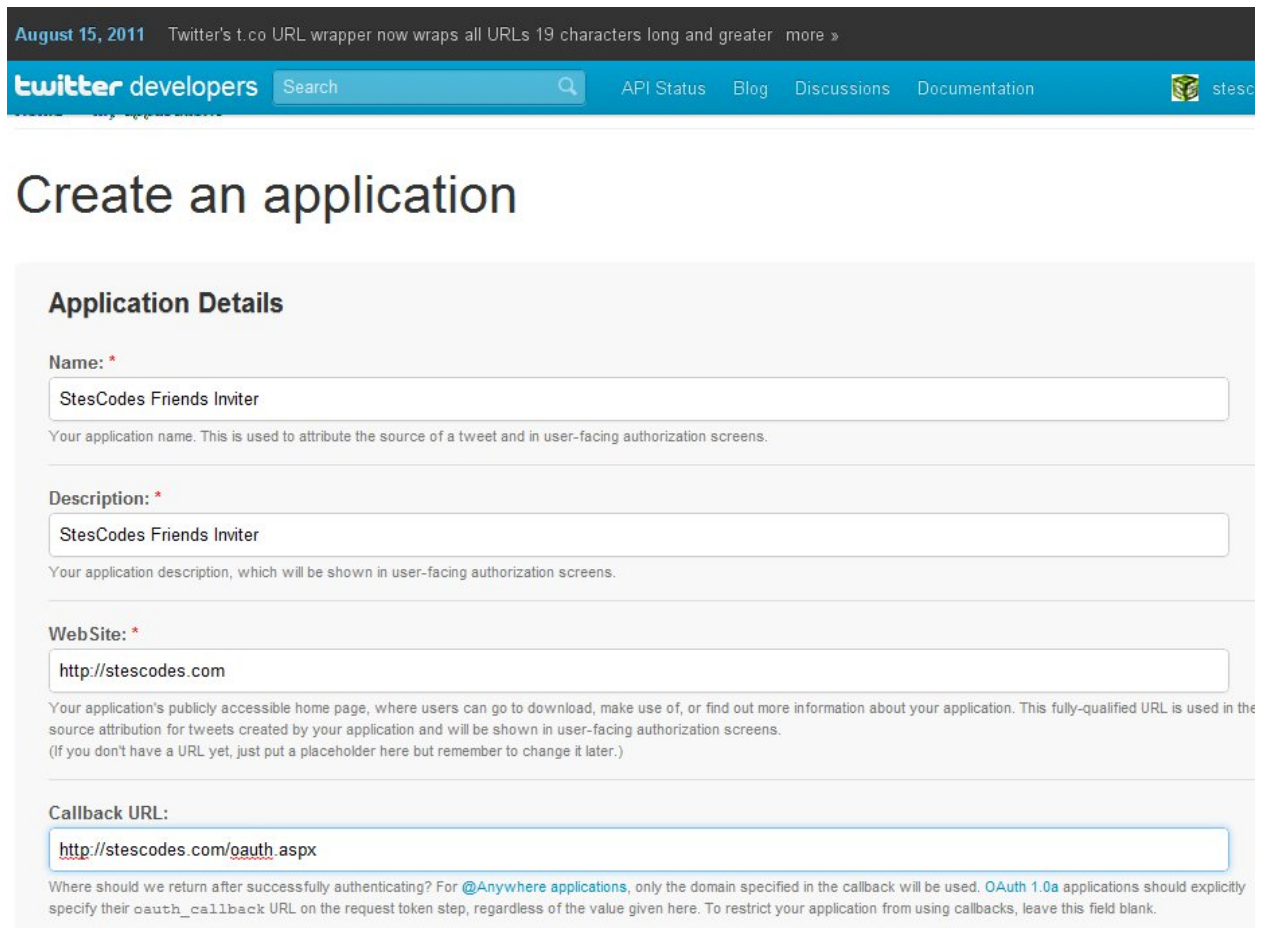
## TWITTER

The below screenshot shows how to get the consumer key and secret key

Step1: Go to <https://dev.twitter.com/apps> and click register new application



Step2: Fill the following details as in screen shot with your appropriate details

A screenshot of the 'Create an application' form on the Twitter Developers website. The form is titled 'Application Details' and contains four input fields, each with a red asterisk indicating it is required. The values entered in the fields are: Name: StesCodes Friends Inviter; Description: StesCodes Friends Inviter; Web Site: http://stescodes.com; Callback URL: http://stescodes.com/oauth.aspx. Below each input field, there is a small line of explanatory text. The top navigation bar is blue with the text 'twitter developers' on the left, a search box in the center, and links for 'API Status', 'Blog', 'Discussions', and 'Documentation' on the right. A user profile icon for 'stescodes' is also visible.

• You may export or extract non-programmatic, GUI-driven Twitter Content as a PDF or spreadsheet by using "save as" or similar functionality. Exporting Twitter Content to a datastore as a service or other cloud based service, however, is not permitted.

B. remove or alter any proprietary notices or marks on the Twitter API or Twitter Content;

C. use or access the Twitter API for purposes of monitoring the availability, performance, or functionality of any of Twitter's products and services or for any other benchmarking or competitive purposes; or

D. use Twitter Marks in a manner that creates a sense of endorsement, sponsorship, or false association with Twitter. You may not use Twitter Marks as part of the name of your company or Service, or in any product, service, name field or logos created by you. All use of Twitter Marks, and all goodwill arising out of such use, will inure to Twitter's benefit.

E. use or access the Twitter API to aggregate, cache (except as part of a Tweet), or store place and other geographic location information contained in Twitter Content.

F. charge a premium for access to tweets via SMS other than your Service's standard data and usage rates.

5. Your Service may be an application or client that provides major components of a Twitter-like end user experience (a "Client"). An example of a

Yes, I agree

By clicking the "I Agree" button, you acknowledge that you have read and understand this agreement and agree to be bound by its terms and conditions.

**CAPTCHA**

Please type the two words below.

hounti red

hounti red

stop spam.  
read books.


Create your Twitter application

Step3: Use the consumer key and secret key on your web.config file

August 15, 2011 Twitter's t.co URL wrapper now wraps all URLs 19 characters long and greater [more >](#)

**twitter developers** Search API Status Blog Discussions Documentation

Details Settings @Anywhere domains Reset keys Delete

 StesCodes Friends Inviter  
<http://stescodes.com>

**Organization**

Information about the organization or company associated with your application. This information is optional.

Organization	None
Organization website	None

**Links wrapping**

Wraps in a t.co link all URLs included in tweets posted through your application.

t.co links wrapping for all URLs	No
----------------------------------	----

**OAuth settings**

Your application's OAuth settings. Keep the "Consumer secret" a secret. This key should never be human-readable in your application.

Access level	Read-only <a href="#">About the application permission model</a>	Copy the consumer key and secret to your web.config settings
Consumer key	<input type="text"/>	
Consumer secret	<input type="text"/>	
Request token URL	<a href="https://api.twitter.com/oauth/request_token">https://api.twitter.com/oauth/request_token</a>	

## LINKEDIN

The below screenshot shows how to get the consumer key and secret key

Step 1: Go to <https://www.linkedin.com/secure/developer>

Step 2: Click Add New Application

### LinkedIn Developer Network

#### List of Applications

You have not added any applications yet.

[+ Add New Application](#)

Click "Add new Application"

[« Back to LinkedIn Developer Network](#)

Step 3: Provide basic information

### LinkedIn Developer Network

#### Add New Application

Fill out the form to register a new application:

Provide basic information

##### Company Info

\* Company Name:

Account Administrators: You will be assigned as an account administrator.

Additional Administrators:

Administrators appearing here will be account administrators for all applications from this company. You can add/remove other administrators and developers.

##### Application Info

\* Application Name:

\* Description:

Integration URL:

Example URL where the integration will go live.

App Logo Secure URL:

URL of an 80x80 logo for your app. SSL is required now.

JavaScript API Domain:

Fully-qualified domain name of all pages that will call the JavaScript API with this key (required if u

\* Application Type:

If your application qualifies as more than one type, create a new application for each one.

\* Application Use:

What best describes your application?

\* Live Status:

While in development, your network updates will only go to the developers you choose. When live

Application Developers:

Network updates you send will appear only for developers you list.

Include yourself as a developer for this application

## Step 4: Providing redirect url

Programming Tools:  PHP  
 C++  
 C#  
 Java  
 ColdFusion

Enter all the development languages and tools you use. LinkedIn uses this information to provide you better support

Contact Info

\* Developer Contact Email: [redacted]@gmail.com

\* Phone: [redacted]

Support Contact Email: [redacted]@gmail.com

Phone: [redacted]

Business Contact Email: stescodes@gmail.com

Phone: [redacted]

OAuth User Agreement

OAuth Redirect URL:  Provide the redirect url, our redirect url page is oauth.aspx Remember, when you go live change this to live url

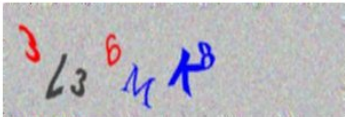
URL to return users to your app after they grant access. Only used if you do not pass in a redirect URL when you access.

\* Agreement Language:

Select the display language of the user agreement screen. Browser Locale Setting is recommended.

Term of Service

\*Agree:  I have read and agree to the LinkedIn API Terms of Use.



Click here for audio

\*Security text:

Please enter the text you see above or try a different image.

or Cancel

## Step 5: Copy the API key and secret to web.config settings

**LinkedIn** DeveloperNetwork

✔ Your application was successfully created.

Application Details

Company:  
StesCodes

Application Name:  
new test FI

API Key:

Secret Key:

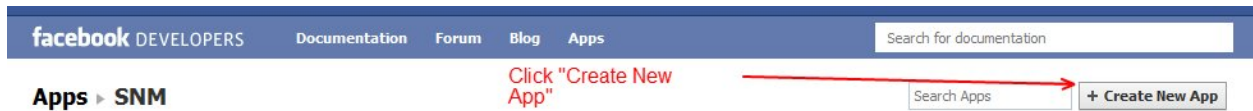
Copy API key and secret to your web.config settings

FACEBOOK:

The below screenshot shows how to register and get AppID.

Step1: Go to <http://www.facebook.com/developers/>

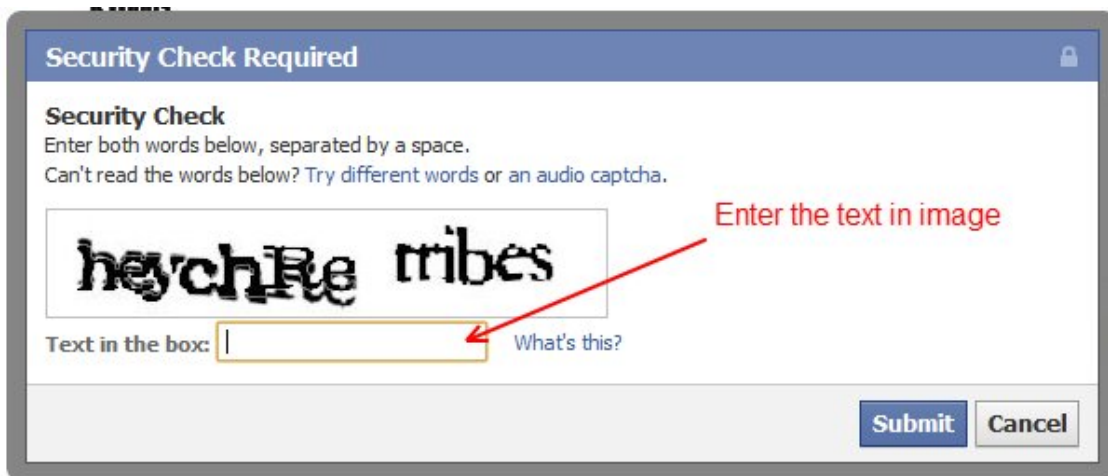
Step2: Click "Set up new application"



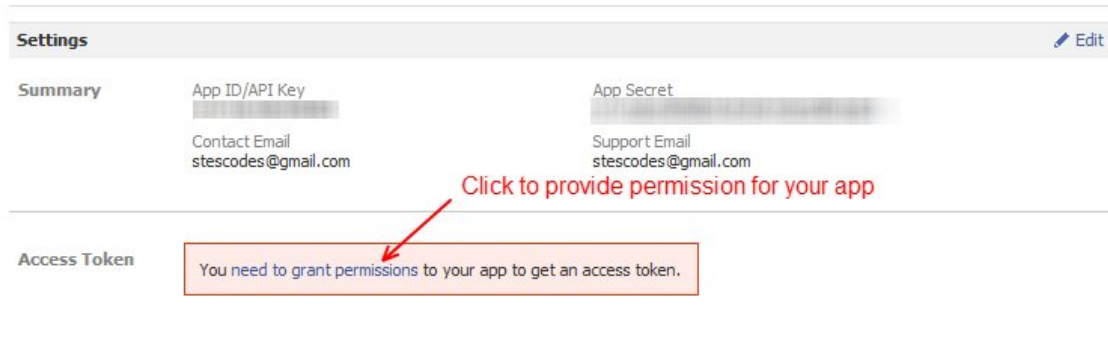
Step3: Provide application name



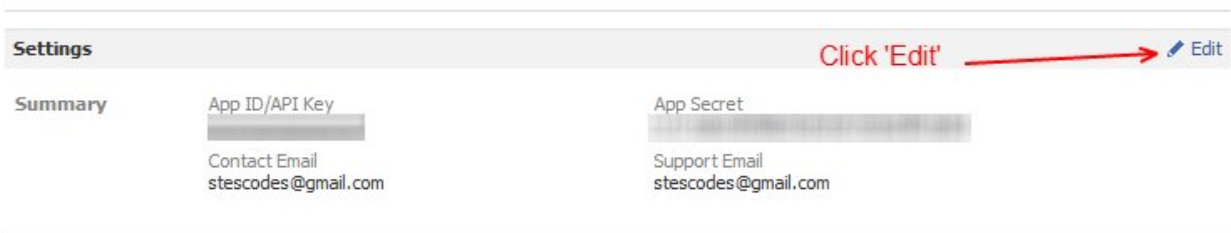
Step4: Solve security check



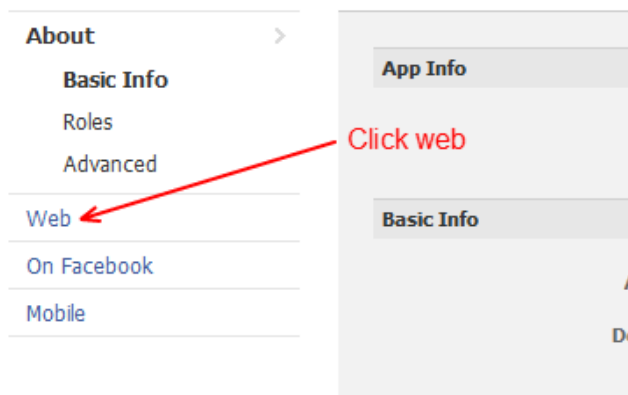
## Step5: Provide permission



## Step:6 Click edit to provide redirect url



## Step: 7 click web to provide redirect url



## Step 8: Provide the redirect url

**Websites**  
Facebook Platform enables you to make your website more social. Drive engagement with Social Plugins like the Like Button, or simplify user sign-in with the Login Button and Registration Plugin.  
Learn more about Websites

**App Info**

App ID: [redacted]  
App Secret: [redacted] (reset)

**Website Settings**

Site URL: [?]   
Required: URL of your site.

Site Domain: [?]   
Required: Domain to enable authentication (subdomains included).

**Save Changes**

## Step 9: Copy the App Id to web.config file

**Changes saved.** Note that your changes may take **several minutes** to propagate to all servers.

**Websites**  
Facebook Platform enables you to make your website more social. Drive engagement with Social Plugins like the Like Button, or simplify user sign-in with the Login Button and Registration Plugin.  
Learn more about Websites

**App Info**

App ID: [redacted]  
App Secret: [redacted] (reset)

**Website Settings**

Site URL: [?]   
Required: URL of your site.

Site Domain: [?]   
Required: Domain to enable authentication (subdomains included).

**Save Changes**

## GOOGLE FRIENDS CONNECT

The below screenshot shows how to register and get Site ID.

Step 1: Go to <http://www.google.com/friendconnect/admin/site/setup>

Step 2: Provide basic information and redirect url

**+ Add new site**  
Click to add new site

Provide the website url as your redirect url, [http://localhost:8184/Stescodes\\_inviter\\_partD/friendsinviter.aspx](http://localhost:8184/Stescodes_inviter_partD/friendsinviter.aspx)

When you go live change this to live url

### Tell us about your website

**Website name**  
StesCodes\_local\_FI  
The name of your website

**Website URL**  
[http://localhost:8184/Stescodes\\_inviter\\_partD/friendsinviter.aspx](http://localhost:8184/Stescodes_inviter_partD/friendsinviter.aspx)  
The full address of your website (e.g. <http://www.example.com>)

**Website language**  
Automatic  
This is the language you'd like to use in Friend Connect gadgets.

Continue

Step 3: Click Plug-ins & APIs to get the site ID

**StesCodes\_lo...**

- Overview
- Gadgets
- Interests
- Newsletters
- AdSense
- Moderate
- Community data
- Plug-ins & APIs
- Settings

+ Add new site

Click Plug-ins & APIs

**✓ Congratulations, you've added**  
[http://localhost:8184/Stescodes\\_inviter\\_partD/friendsinviter.aspx](http://localhost:8184/Stescodes_inviter_partD/friendsinviter.aspx).

**Now, let users join your site**

Get started with the members gadget, giving users an easy way to join your website, create profiles, find other users, and invite friends to join.

**Add the members gadget**

## Step 4: Copy the site id to web.config settings

**StesCodes\_Io...**

- Overview
- Gadgets
- Interests
- Newsletters
- AdSense
- Moderate
- Community data
- Plug-ins & APIs**
- Settings

[Add new site](#)

### Plug-ins & APIs

In addition to embedding social gadgets, Friend Connect allows you to tightly integrate social experiences into your site using APIs and plugins.

See it in action! [Visit our example site.](#)

[Friend Connect API Documentation](#)  
Complete documentation, tutorials, and examples.

[Examples](#)  
See additional examples of Friend Connect API in action.

**Javascript API** REST API Plugins

To use the **OpenSocial Javascript API** from your site, you'll need to copy the following code into the HTML of each page that you'd like to make API calls from.

```
<!-- Load the Google AJAX API Loader -->
<script type="text/javascript" src="http://www.google.com/jsapi"></script>

<!-- Load the Google Friend Connect javascript library. -->
<script type="text/javascript">
google.load('friendconnect', '0.8');
</script>

<!-- Initialize the Google Friend Connect OpenSocial API. -->
<script type="text/javascript">
google.friendconnect.container.setParentUrl('/Stescodes_inviter_partD/' /*
location of rpc_relay.html and canvas.html */);
google.friendconnect.container.initOpenSocialApi({
  site: [REDACTED],
  onload: function(securityToken) { /* your callback, which is passed a security
token */ }
});
</script>
```

Copy the site id to web.config settings